



Classroom “Bee-Hives”

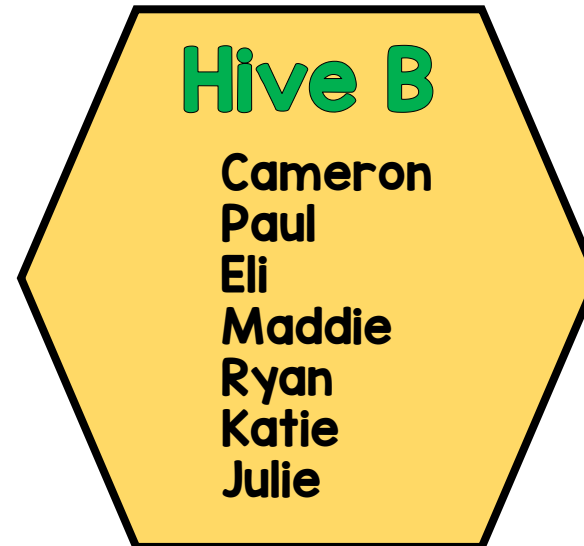
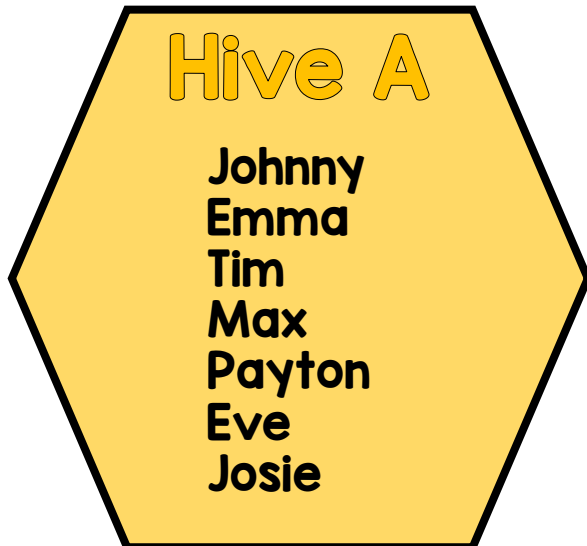
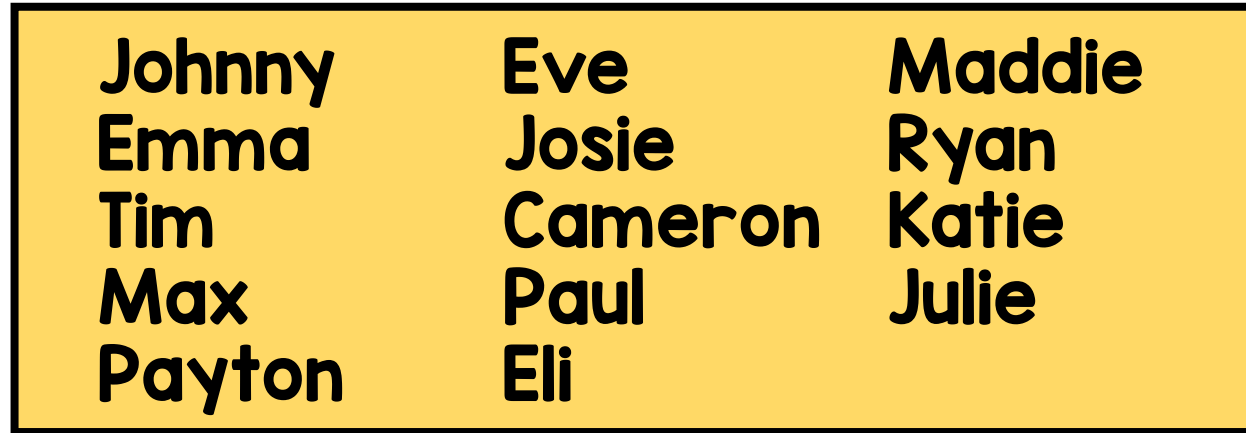
*Creating student pods
within a classroom*



EXAMPLE
CLASS #1



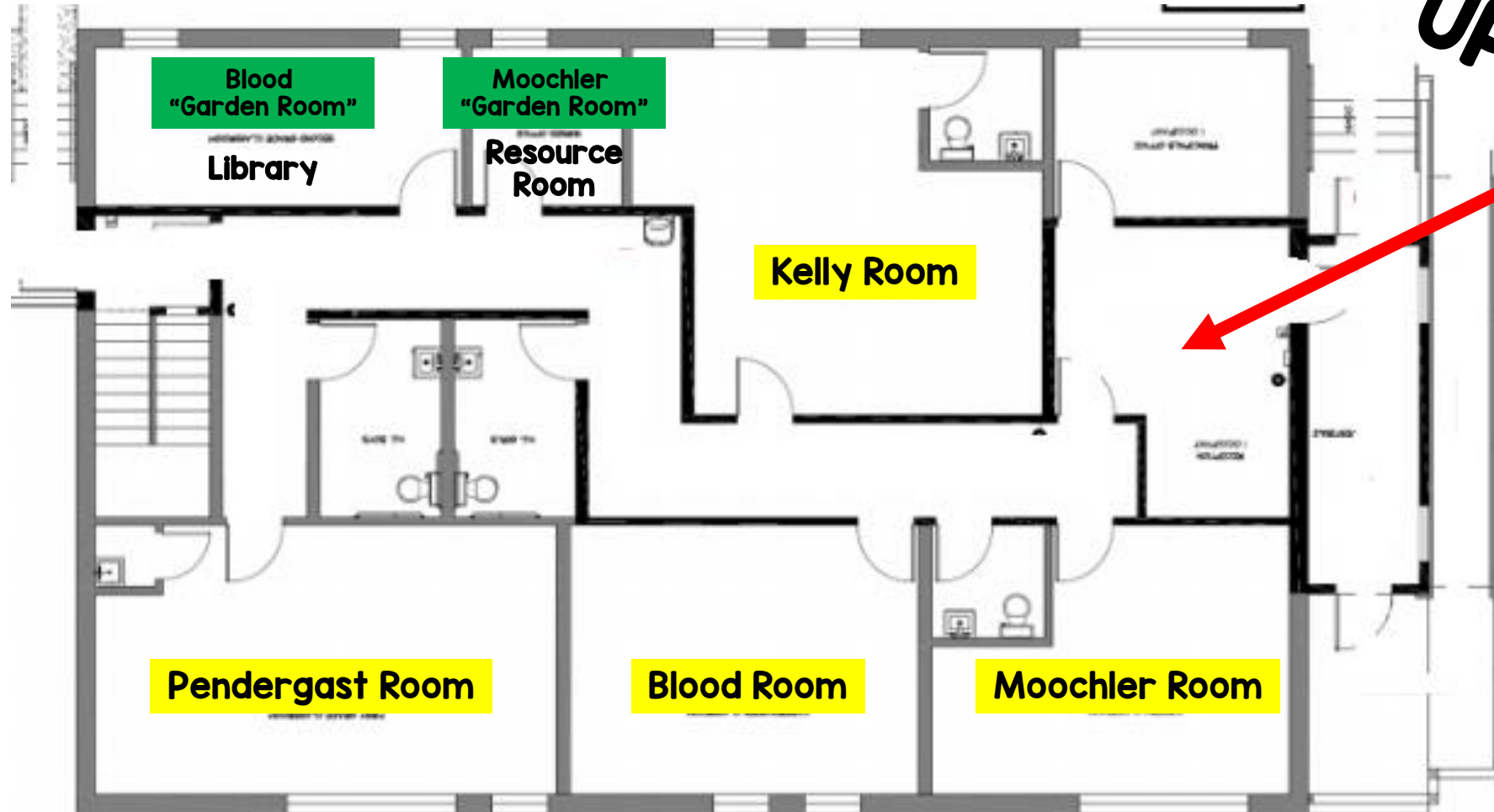
CLASS #1



“Garden Rooms”

A second room designated for each class to avoid crowding in classrooms during playtime

Another place to learn and “grow” 😊



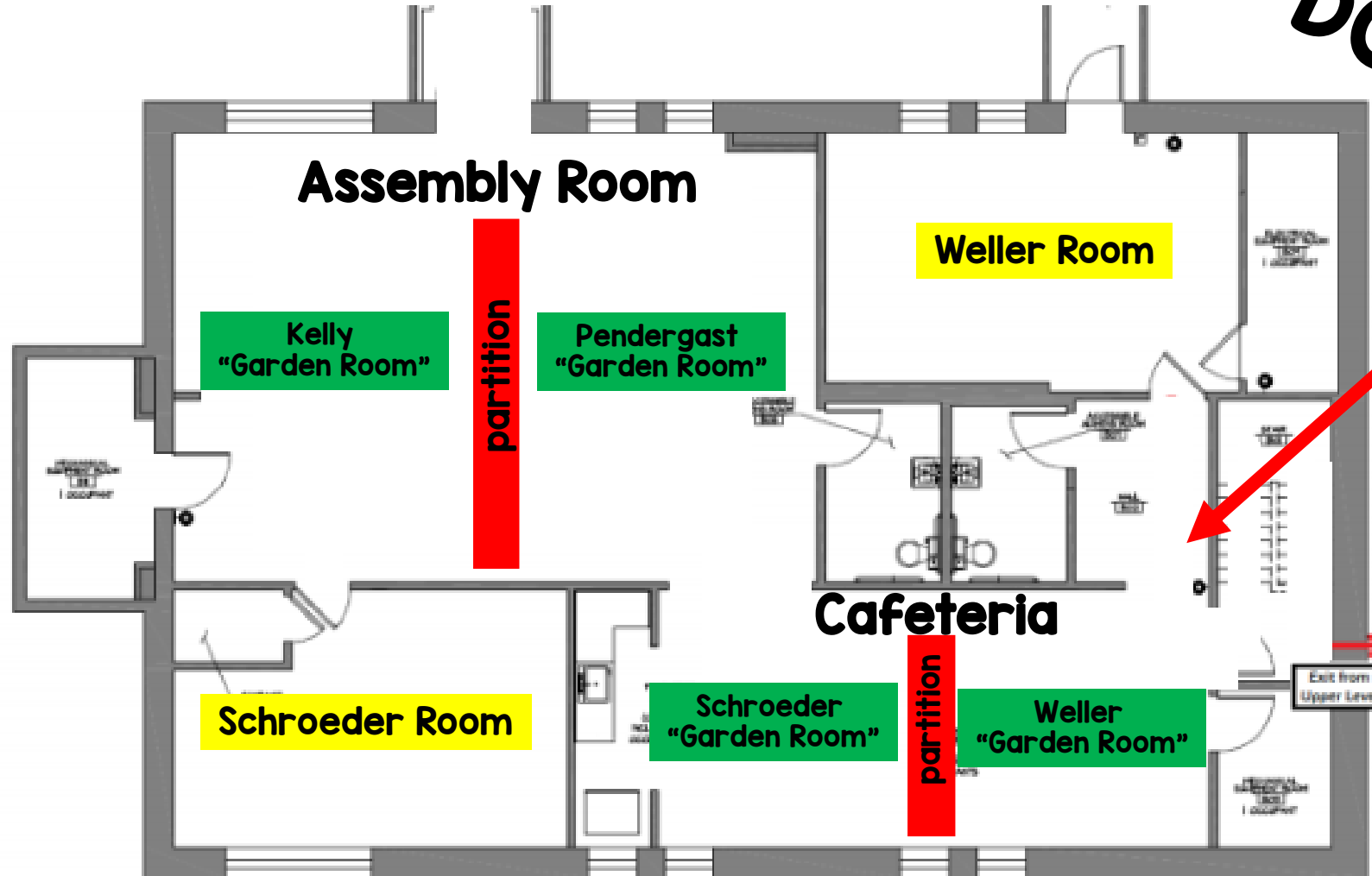
UPSTAIRS



“Garden Rooms”

A second room designated for each class to avoid crowding in classrooms during playtime

Another place to learn and “grow” 😊



SAMPLE SCHEDULE- NURSERY

Time	TEACHER in Classroom	TEACHER ASSISTANT in "Garden Room"
8:00-8:15am	Arrival Socially distanced in classroom/hallway unpacking	
HIVES MOVE		
HIVE A		HIVE B
8:15-8:30am	Morning Movement/Settle In	Morning Movement/Settle In
8:30-8:45am	Virtual Assembly	Virtual Assembly
8:45-9:00am	Snack	Snack
9:00-10:30am	Circle Time/Whole Group/Centers	Specialized Activity/Choice Time
10:30-11:00am	Lunch	Lunch
11:00-11:30am	Recess (Playground or Black Top)	
11:30-1:30pm	Socially distanced nap (use of barriers and spreading out/feet to feet)	
HIVES MOVE		
HIVE B		HIVE A
1:30-2:45pm	Snack/Circle Time/Whole Group/Centers	Snack/Specialized Activity/Choice Time
2:45-3:00pm	Social Distance Pack Up/Dismissal	
Teacher Assistant keep Busy Bee students in room for snack		

SAMPLE SCHEDULE- PRE K

Time	TEACHER in Classroom	TEACHER ASSISTANT in "Garden Room"
8:00-8:15am	Arrival Socially distanced in classroom/hallway unpacking	
HIVES MOVE		
HIVE A		HIVE B
8:15-8:30am	Morning Movement/Settle In	Morning Movement/Settle In
8:30-8:45am	Virtual Assembly	Virtual Assembly
8:45-9:00am	Snack	Snack
9:00-11:00am	Circle Time/Whole Group/Centers	Specialized Activity/Choice Time
11:00-11:30am	Lunch	Lunch
11:30-12:00pm	Recess (Playground or Black Top)	
12:00-1:00pm	Socially distanced nap (use of barriers and spreading out/feet to feet)	
HIVES MOVE		
HIVE B		HIVE A
1:00-2:45pm	Circle Time/Whole Group/Centers	Specialized Activity/Choice Time
2:45-3:00pm	Social Distance Pack Up/Dismissal	
Teacher Assistant keep Busy Bee students in room for snack		

SAMPLE SCHEDULE- KINDERGARTEN/ 1st GRADE

Time	TEACHER in Classroom	TEACHER ASSISTANT in "Garden Room"
7:50-8:00am	Arrival Socially distanced in classroom/hallway unpacking	
HIVES MOVE		
HIVE A		HIVE B
8:00-8:30am	Morning Work/Settle In	Morning Work/Settle In
8:30-8:45am	Virtual Assembly	Virtual Assembly
8:45-9:00am	Snack	Snack
9:00-11:30am	Circle Time/Literacy & Math Centers	Specialized Activity/Choice Time
11:30-12:00pm	Lunch	Lunch
12:00-12:30pm	Recess (Playground or Black Top)	
HIVES MOVE		
HIVE B		HIVE A
12:30-2:45pm	Circle Time/Whole Group/Centers	Specialized Activity/Choice Time
2:45-3:00pm	Social Distance Pack Up/Dismissal *Teacher Assistant keep Busy Bee students in room for snack*	